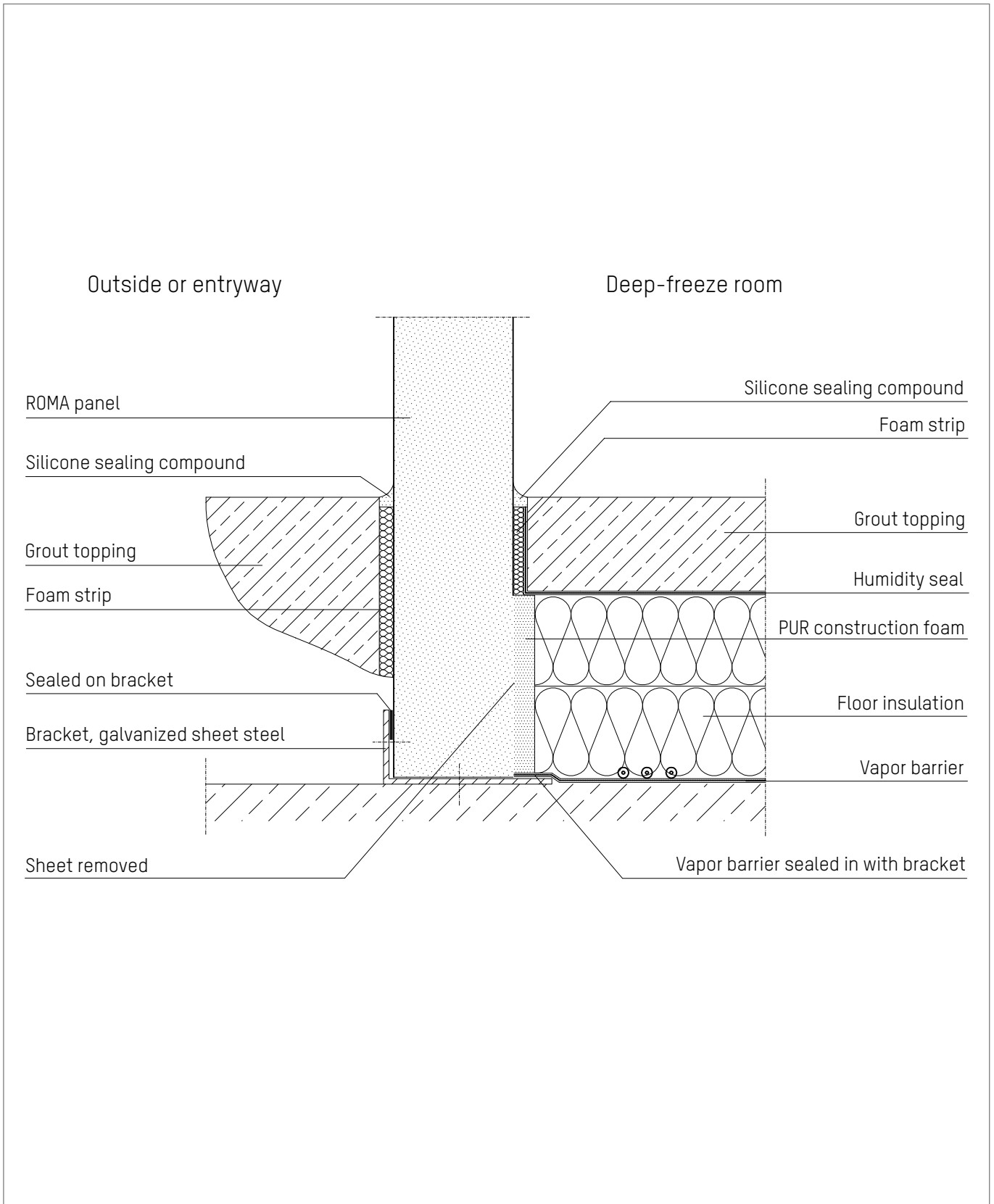


Cold-store and deep-freeze construction

Base design

K 401.1

As of: 09/15

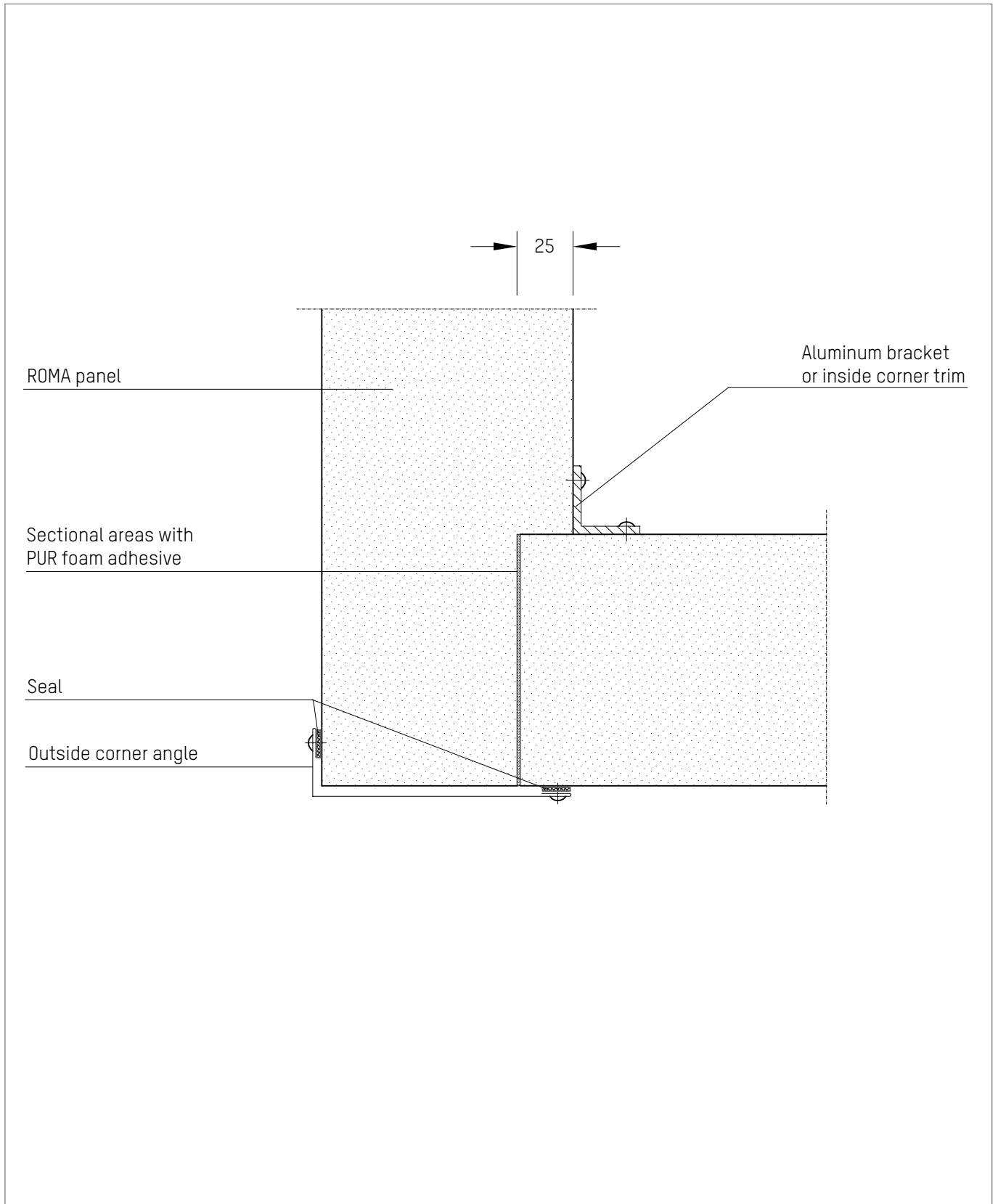


Cold-store and deep-freeze construction

Base design

K 402.1

As of: 09/15

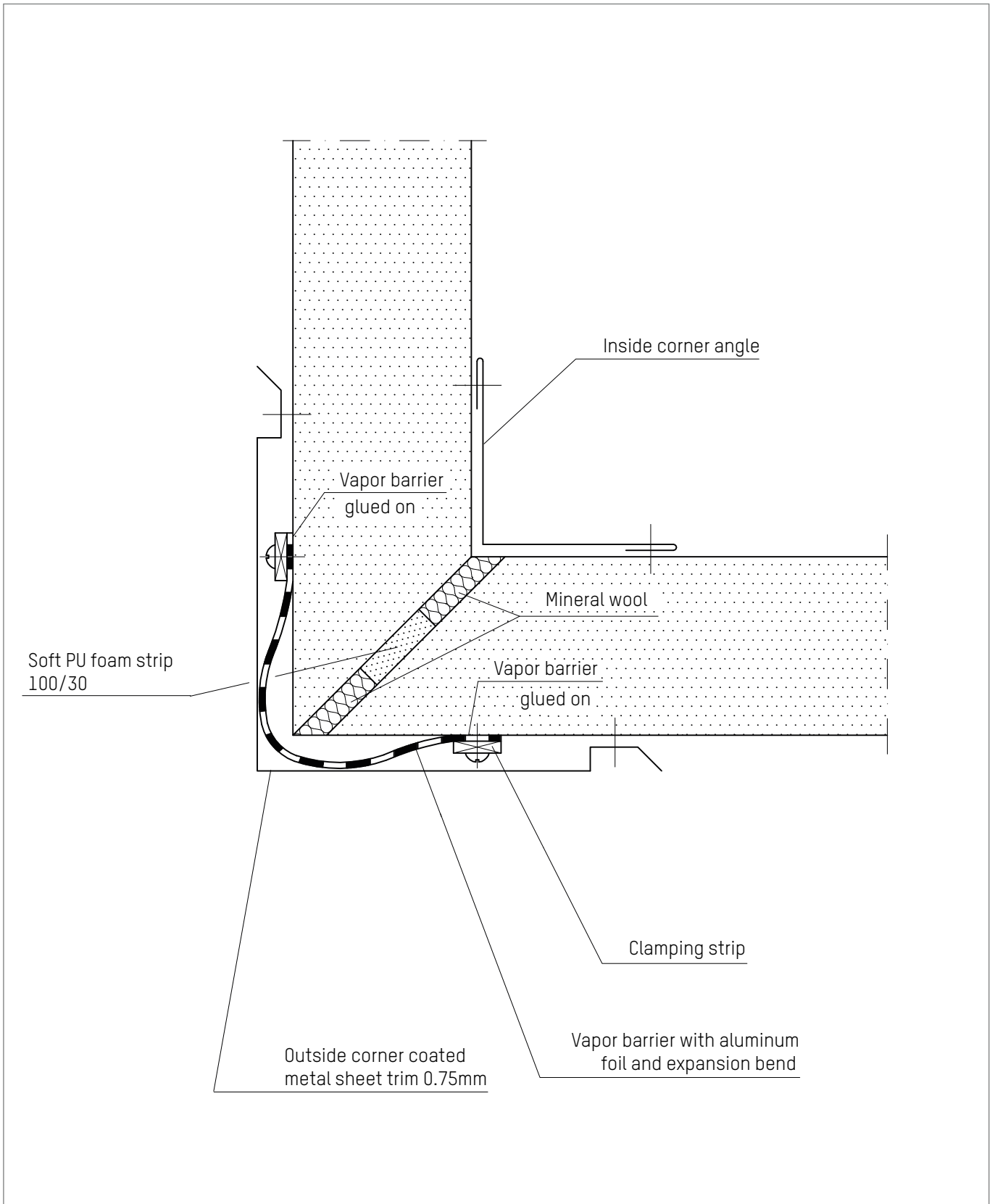


Cold-store and deep-freeze construction

Corner design

K 403.1

As of: 09/15

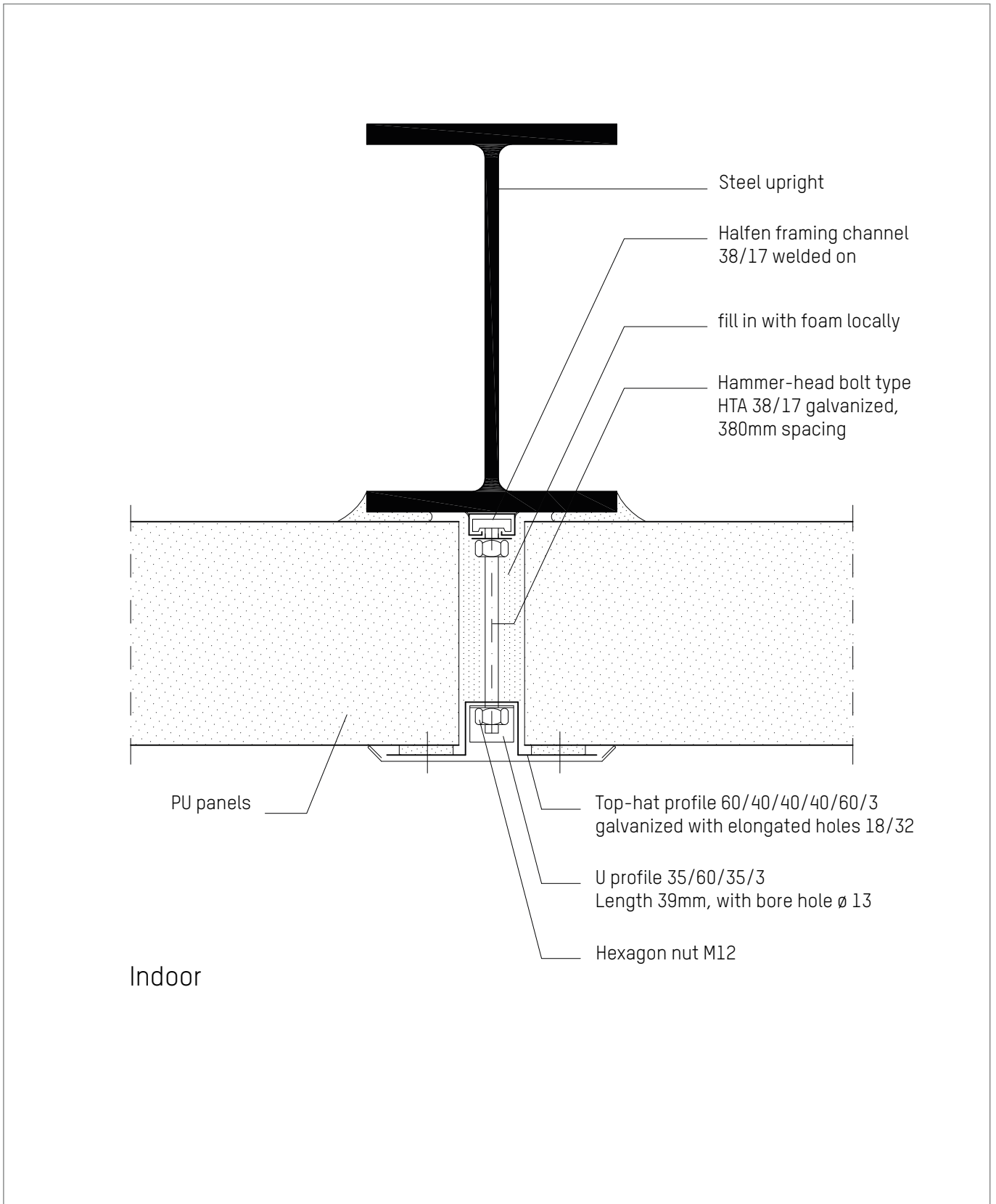


Cold-store and deep-freeze construction

Corner design for walk-in freezers

K 404.1

As of: 09/15



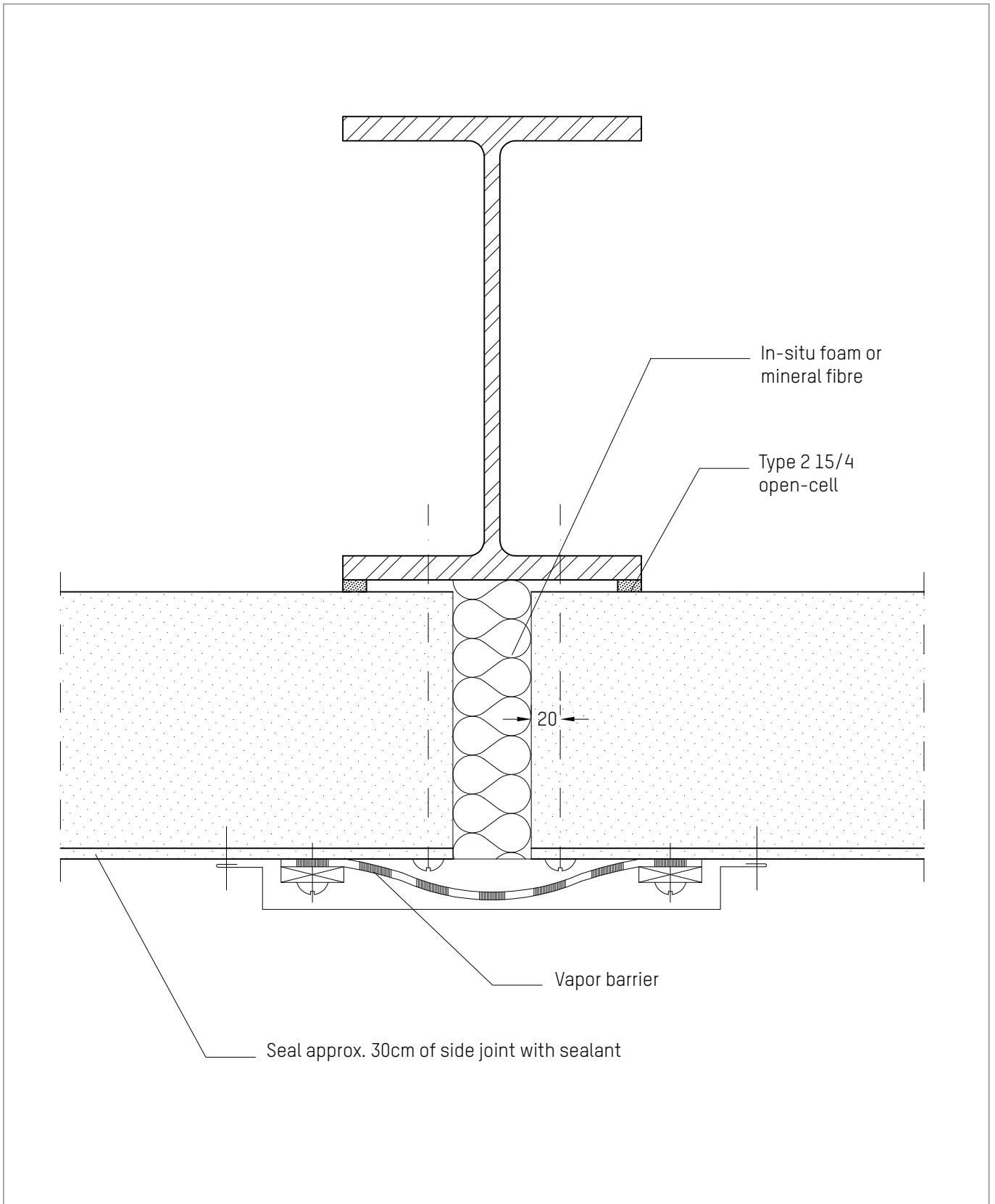
Cold-store and deep-freeze construction

End lap formation with horizontal panel installation

External base construction

K 405.1

As of: 09/15



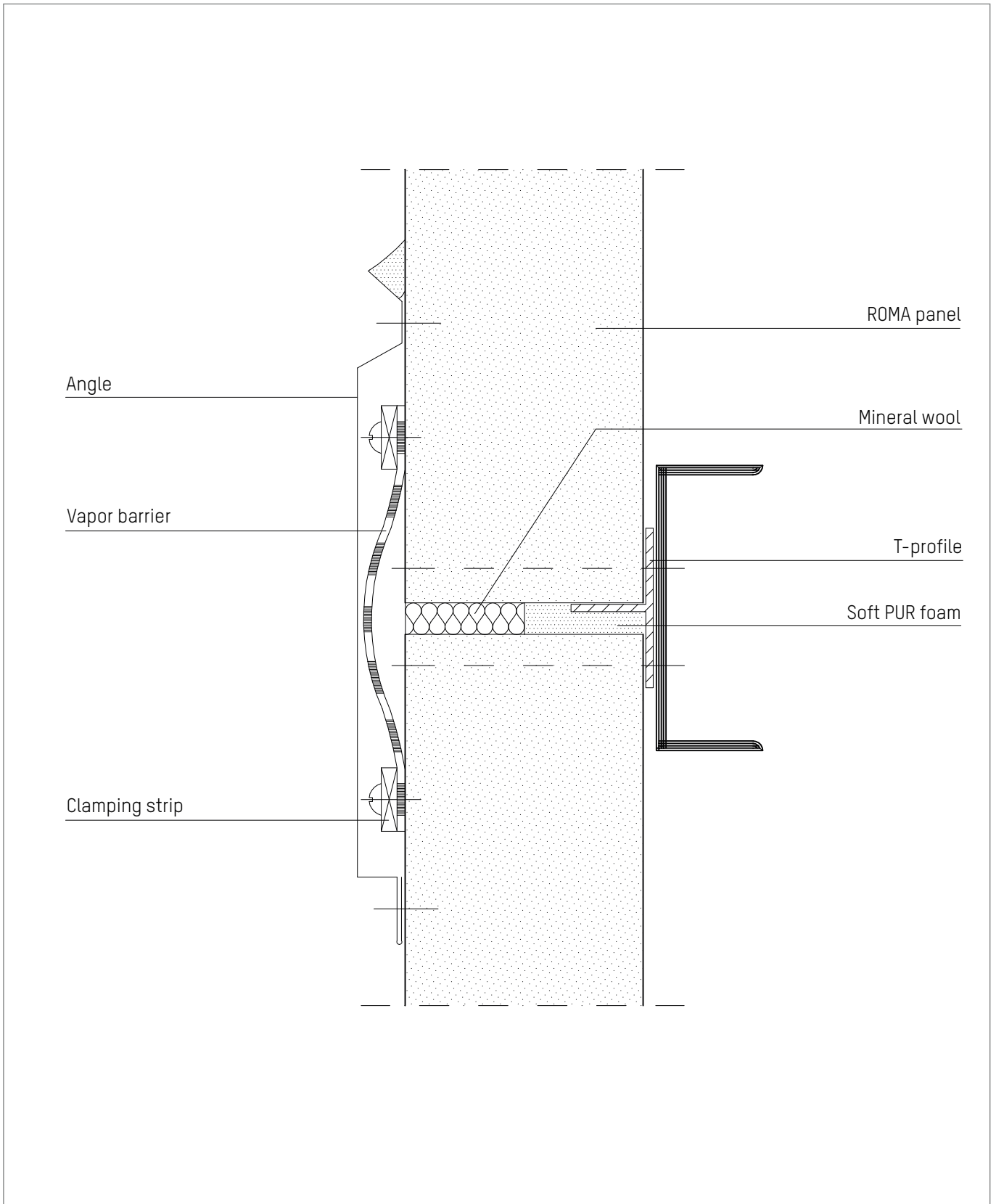
Cold-store and deep-freeze construction

End lap extension with vertical panel installation

Internal base construction

K 406.1

As of: 09/15



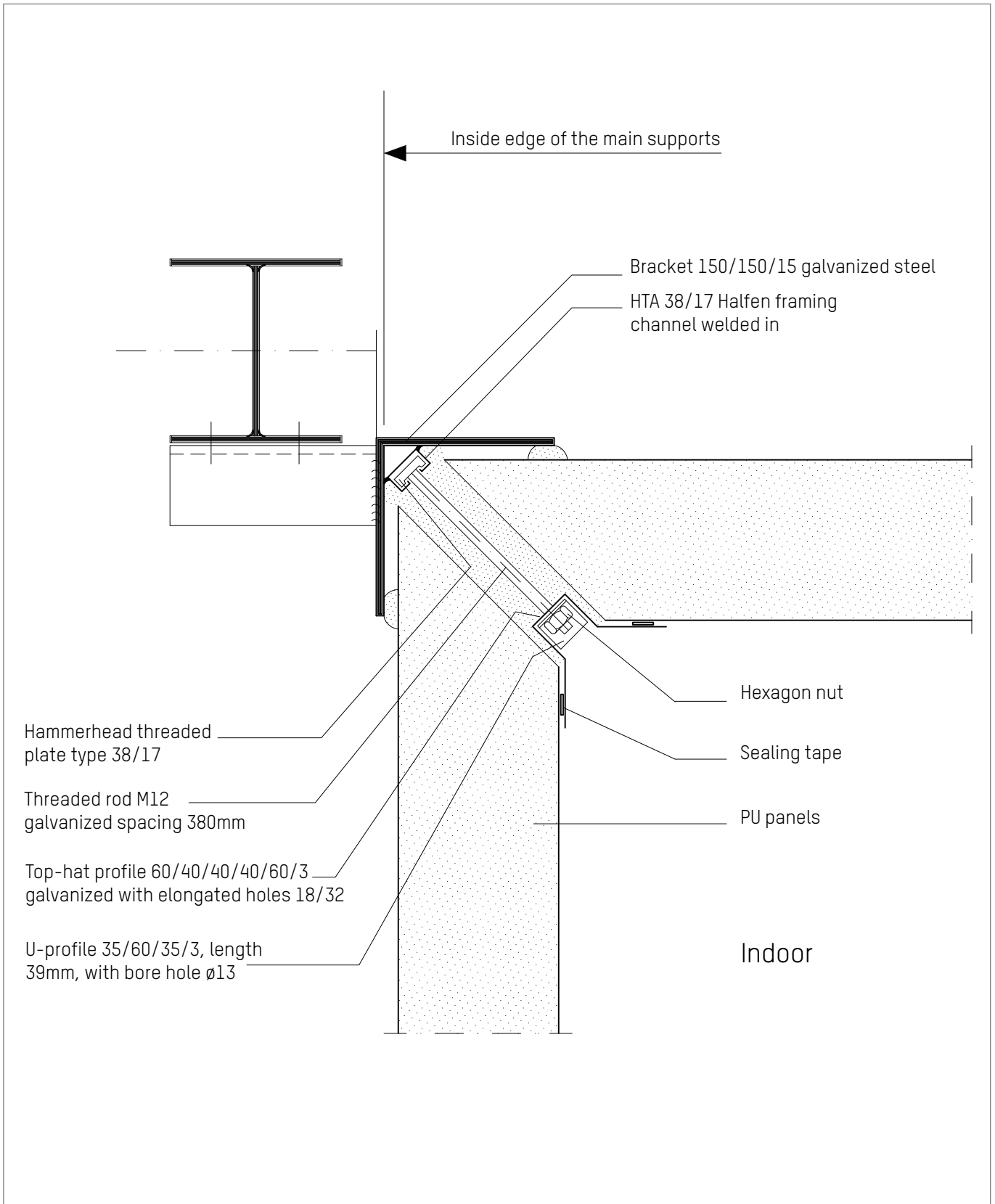
Cold-store and deep-freeze construction

End lap extension with vertical panel installation

Internal base construction

K 407.1

As of: 09/15



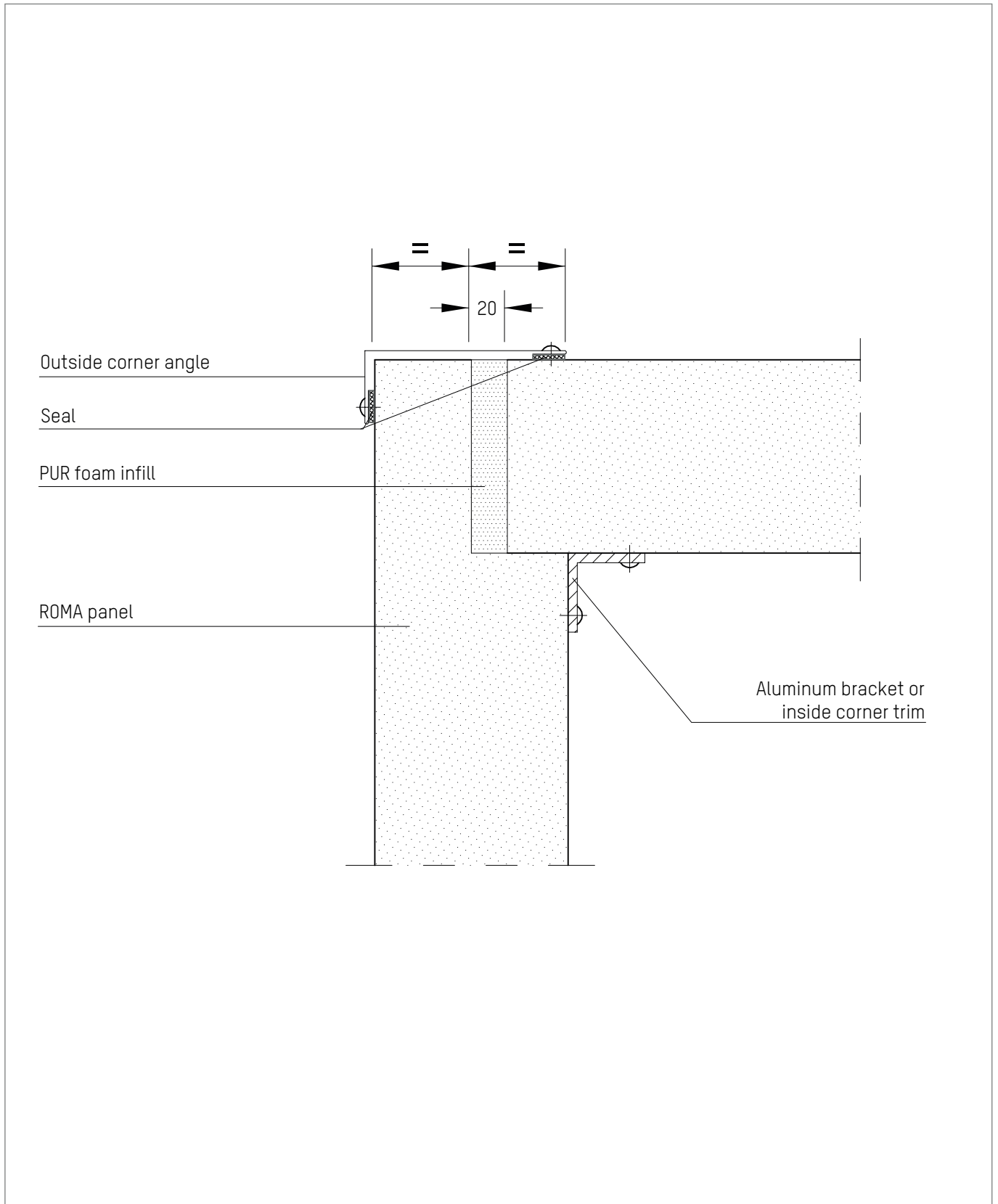
Cold-store and deep-freeze construction

Corner formation with horizontal panel installation

External base construction

K 408.1

As of: 09/15



Cold-store and deep-freeze construction

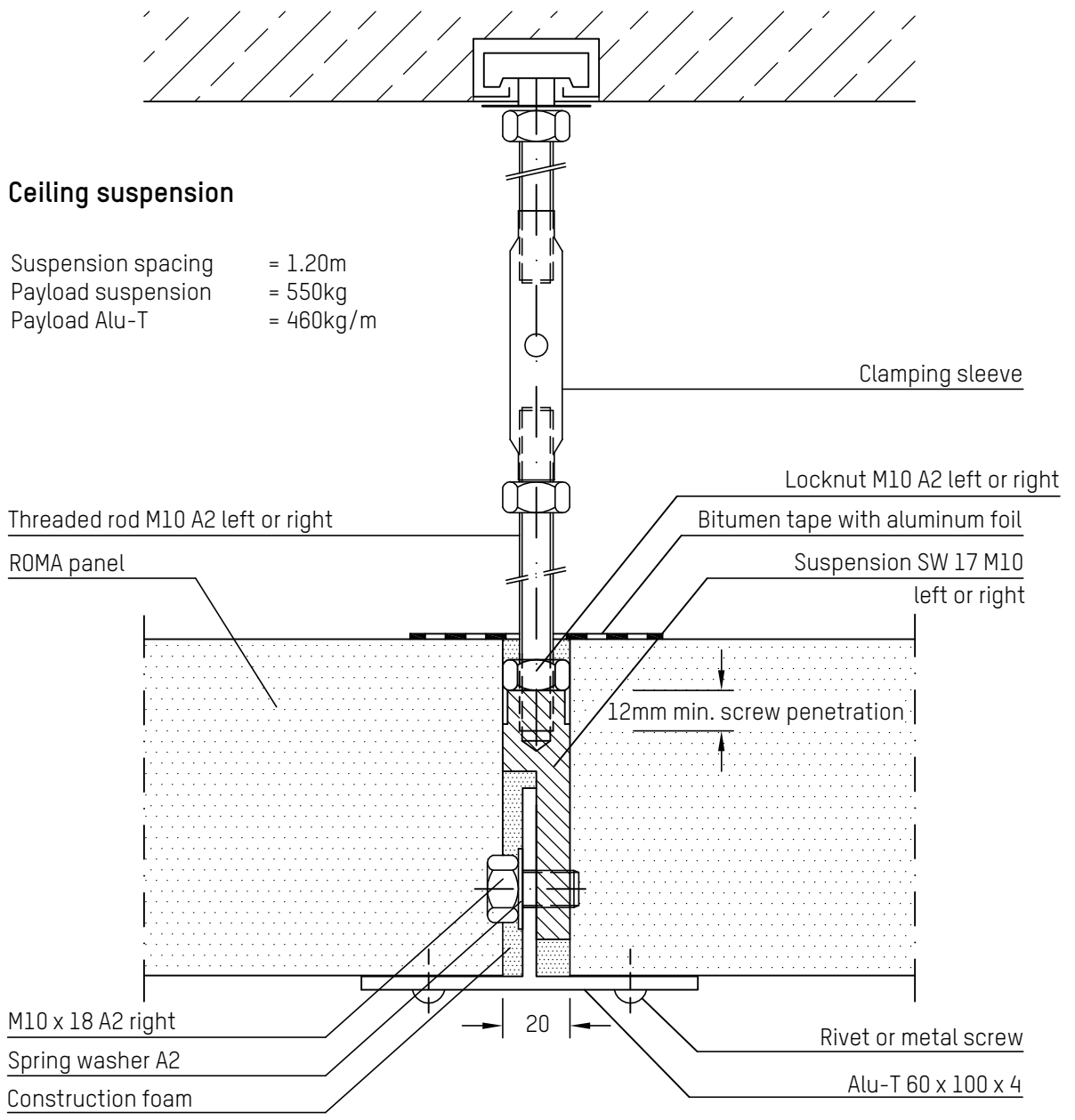
Ceiling-wall connection

K 409.1

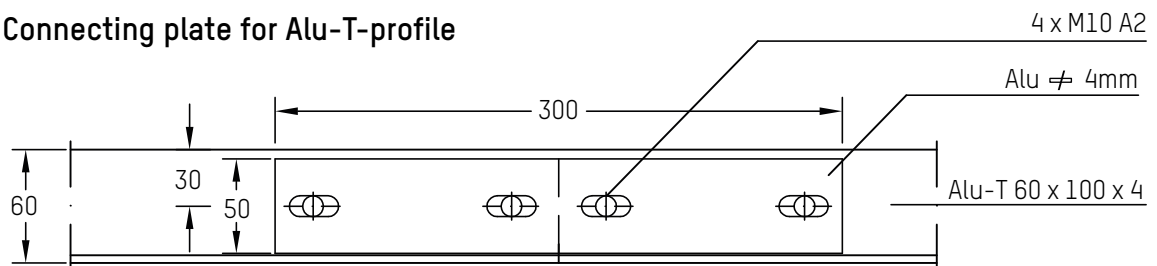
As of: 09/15

Ceiling suspension

Suspension spacing = 1.20m
 Payload suspension = 550kg
 Payload Alu-T = 460kg/m



Connecting plate for Alu-T-profile

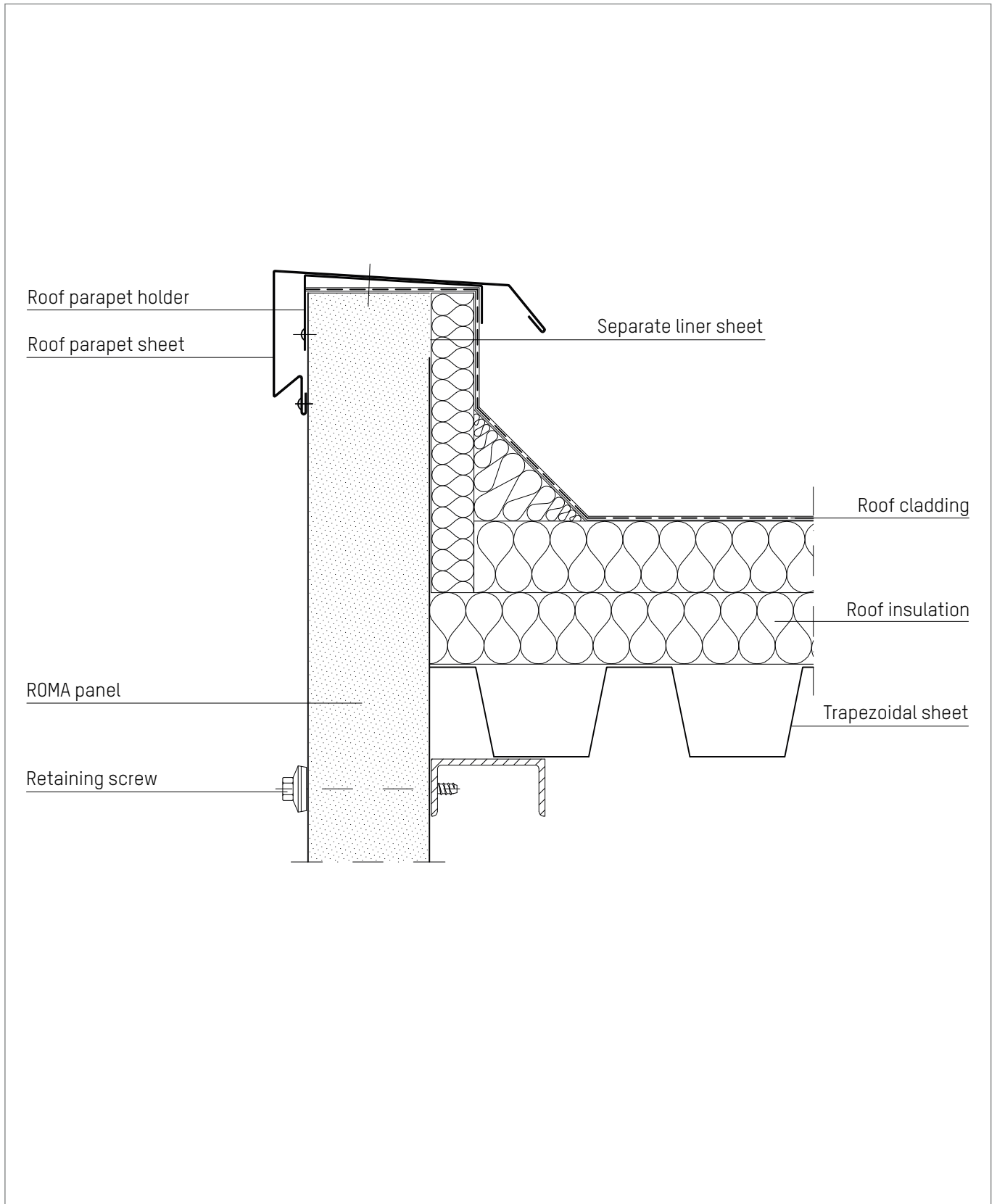


Cold-store and deep-freeze construction

Ceiling suspension

K 410.5

As of: 07/16



Cold-store and deep-freeze construction

Roof parapet design

K 411.1

As of: 09/15