

ROMA INSULATION SYSTEMS

NEW: Roof panels for PV modules

Quick-mount roof panels type RD



ROMA quick-mount roof panels type RD



The construction industry is on the lookout for new solutions to make buildings more sustainable and drive the energy transition. We have taken up this challenge and are pleased to present our product innovation: the pioneering roof panel type RD.

With the new roof panel type RD, we present you a sandwich panel that significantly facilitates the installation of a PV system. The mushroom-headed ROMA roof profiling allows you to install your photovoltaic system without having to drill into the panel outer shell. Form-fitting, ap-

proved clamps allow for quick and easy installation of your PV system, making the roof panel a great choice for anyone looking for a high-quality, energy-efficient and future-proof sandwich roof.

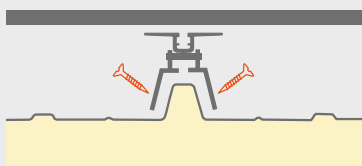
The roof panel type RD consists of two high-quality steel face sheets and a PIR rigid foam core with a factory-made triple seal in the joint. It therefore combines the best for your roof on the outside and inside: robust surfaces, excellent insulating properties and compatibility for easy installation of PV modules. To suit individual requirements, the sandwich element

is available in a construction width of 1,000 mm, in lengths of up to 24 m and insulation thicknesses of up to 170 mm (RD212).

Thanks to its optimised profiling, the panel is also suitable for large roof spans. As usual, the roof panel type RD is also available in a wide range of designs. To suit your building project, we offer different insulation thicknesses, a variety of surface coatings and a wide range of colours.

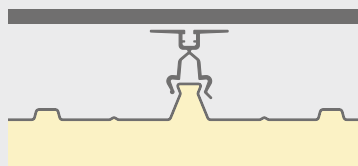
The challenge

A common method of attaching PV systems to sandwich panels is to screw the substructure directly to the panel outer shell. This can lead to corrosion of the cover shell, and thermal deformation of the aluminium rail system can cause leaks.



The solution

ROMA has developed a pioneering fastening solution. Thanks to the new profiling of the PIR roof panel type RD, photovoltaic elements can now be fastened with approved clamps, so that drilling into the panel outer shell is no longer necessary. You can mount the system quickly and, depending on the direction of installation, even without an aluminium rail system.



Up to
30%
less
mounting
time
with our
intelligent
system.

Your benefits at a glance

No drilling of the panel outer shell
 The PV modules are fixed by means of approved clamps, without penetrating the sandwich panels. This protects against corrosion and leaks, while also allowing easy positioning and readjustment of the modules.

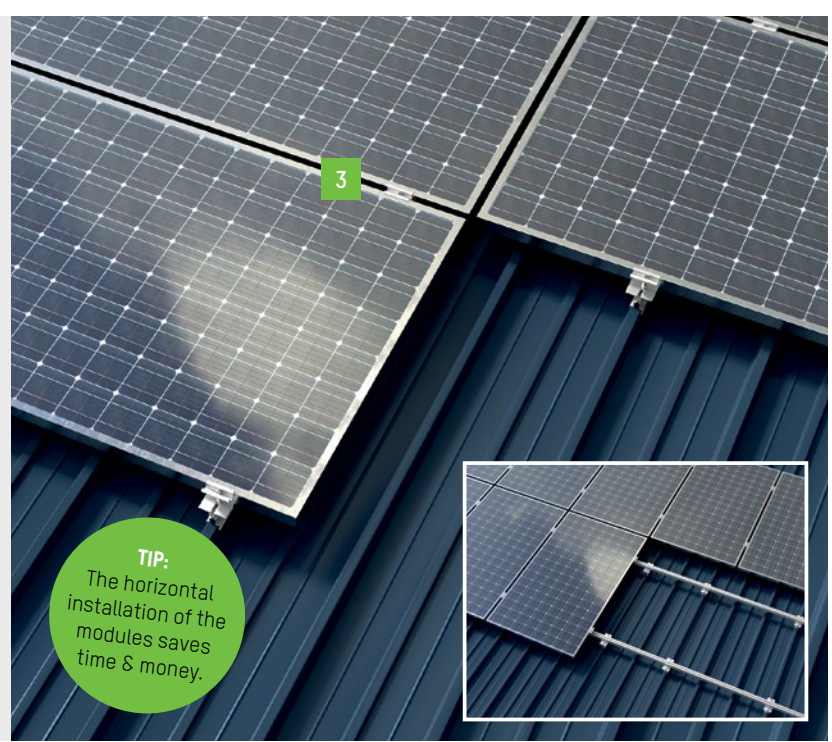
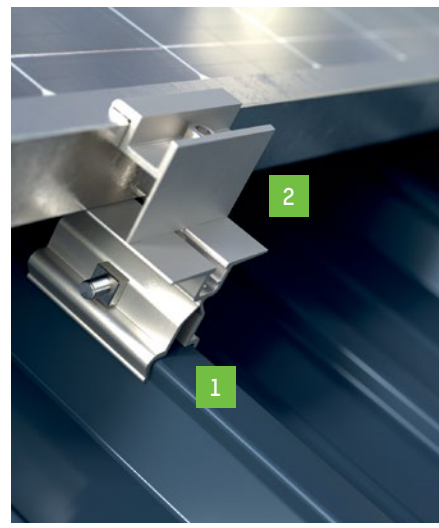
Easy mounting without aluminium rails
 Thanks to the smart mounting system, you can work without a complex aluminium rail system and thus save time and money during installation. Mounting in the deep bead is possible with or without calottes – separate from the photovoltaic mounting level.

One system from a single source
 The new roof panel type RD gives you a coordinated system from a single source, which can be used with almost all framed PV modules. The roof panel type RD is compatible with our proven ROMA MIWO & PIR roof panels.

Optimal rear ventilation
 Due to our raised clamps, the PV modules are optimally back-ventilated, which improves the efficiency of the photovoltaic system.

Accessories

- 1 Base clamp 
- 2 Frame end clamp 
- 3 Frame centre clamp 



TIP:
 The horizontal installation of the modules saves time & money.

One panel – two mounting options

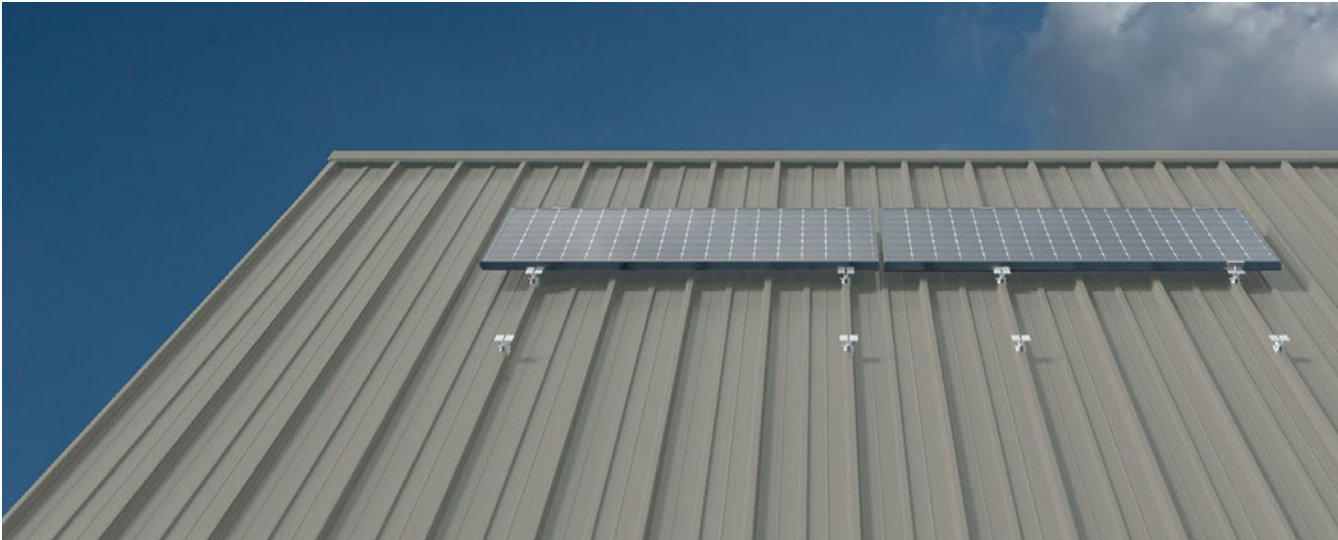
Depending on the direction of installation, the PV modules can be mounted either with or without an aluminium rail system. We recommend horizontal mounting that allows you to save time and money on installation. For vertical installation, cross rails are used as part of the system. However, there is no need to drill any holes on the panel, as the rails can also be clamped onto the high beads with the approved clamps. All components for fastening and sealing at the ridge, eaves and verge can, of course, be purchased from us.

Colors and coatings

We offer you a wide range of colours and coatings in standard and special colours. If you are planning to install a PV system on the new roof panel type RD, we recommend our premium coating ROMA-

plus. This highly corrosion-resistant coating has a total layer thickness of 50 µm. Alternatively we also offer polyester-lacquer coatings and other coating systems. You can therefore adapt

the ROMA roof panel to your specific technical requirements while allowing for a visually appealing design.



We offer a wide range of attractive colours.

Information on top coats and colour shades can be found in our colour range.

Availability

- Preview at BAU23 in April
- Ordering and delivery expected as of Q3/2023
- Approval expected as of Q1/2024
- Available in standard colours RAL 9002, RAL 7016, RAL 3009, RAL 9006, RAL 9007



Learn more about our products
on our homepage:
www.romakowski.com